

Transform for a Better Tomorrow

P.3 CEO's Message 行政總裁的話

P.4 Feature Story 特寫

Transform for a Better Tomorrow
勇於求變 持續向前

P.10 Personality 人物專訪

Meet Mr Kevin O'Brien -
New Chief Executive of JEC
認識新任怡和機器行政總裁—歐嘉榮先生

P.12 Environmental, Health & Safety 環境、健康與安全

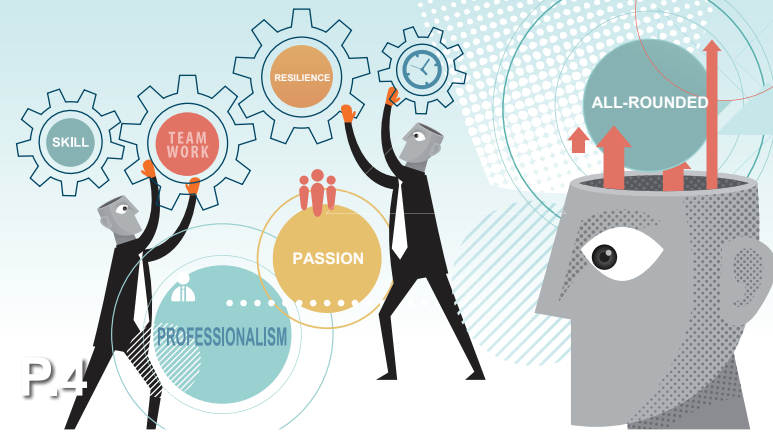
JEC Puts Sustainable Consumption into Practice
怡和機器實踐可持續消費

P.14 News 簡訊

JEC Secured MVAC Contracts for
Link REIT Properties
怡和機器獲領展物業機械通風及
空調系統合約

JEC Philippines Secured Legrand
UPS Supply and Installation for
Shell Exploration Philippines
菲律賓怡和機器為蜆殼菲律賓勘探公司
供應及安裝Legrand無間斷電源供應器

P.15
JEC Thailand Provides
Air Conditioning System for
Samyan Mitrtown Project
泰國怡和機器為Samyan Mitrtown
項目提供空調系統



JEC Thailand Renovates M&E
Systems for Goodyear Factory
泰國怡和機器為固特異輪胎廠
翻新機電系統

JEC Singapore Renewed Facilities
Management Agreement
with Raffles Quay Asset Management
新加坡怡和機器與
新加坡萊佛士碼頭續簽設施管理協議

JEC Singapore Secured Two
MVAC Contracts for
Real Estate Developments
新加坡怡和機器為兩地產項目設計及
安裝通風空調系統

Recognition from Monsanto to JDI
JDI獲業務伙伴孟山都嘉許

Jardine Distribution Inc.
Steps up Efforts to
Reduce Carbon Footprint
JDI致力減少碳足跡

JEC Group Briefing 2018
2018 年度集團簡報會

P.18
JEC Spring Dinner 2018
2018年度怡和機器周年晚宴

P.20 Community Care 關懷社區

Discover Traditional Culture in
Hong Kong
體驗香港原居民傳統文化

P.21 Major Contracts Listing
工程合約



CEO'S MESSAGE 行政總裁的話

This year marks the 95th anniversary of JEC. I'm honoured to join JEC at this important milestone, to scale new heights with the team on the back of our strong history.

In this era of disruptive innovation, we need to stay alert of market demand and trends, then adjust our plans so as to stay ahead. One thing that will never change, is our dedication towards grooming our next generation of talent for the continued sustainable growth of the company. Our people are our most valuable resource, and in this issue, you will find the sharing from five of our next generation workforce who work in different functions and offices of JEC. They all inherited the professionalism and dedication from working in JEC. At the same time, they pursue their own career paths within JEC in different ways. This young talent is helping to shape the future of our company.

I hope you enjoy reading this issue of the JEC Magazine.

我很榮幸在95周年之時加入怡和機器，與團隊共同見證這重要的里程碑，攜手在此基礎上，再創高峰。

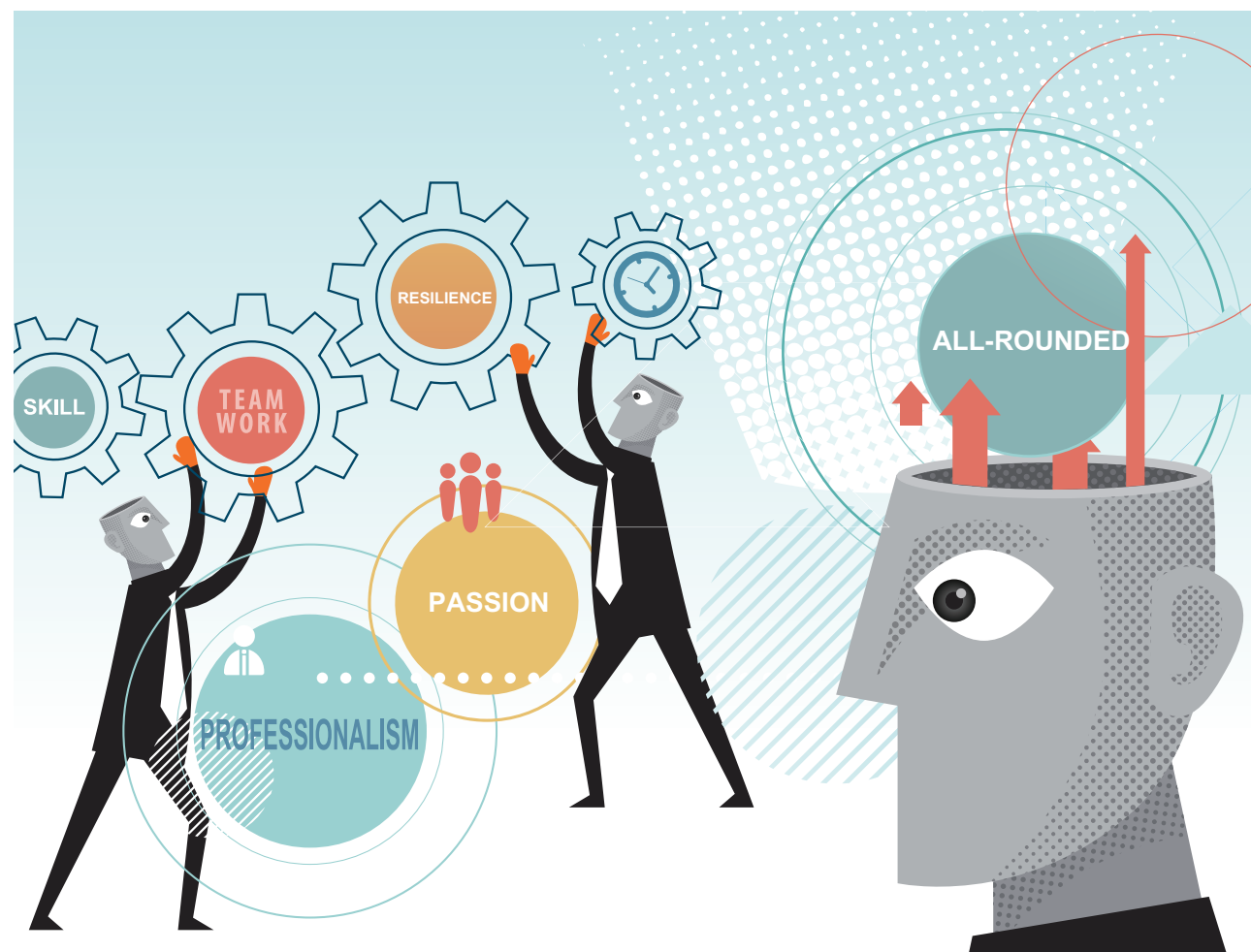
在這個充滿劃時代創新力量的年代，我們需要時刻留意市場需求和趨勢，並作出相應調整，以維持優勢。但不變的，是我們致力於人才培訓，達至企業長遠發展的決心。員工是我們最寶貴的資產，今期的特寫故事分享了五位來自怡和機器不同部門和地區的「新世代」，他們都秉承了怡和機器的專業與奉獻精神，並以不同的方式，追求自己的事業路向，塑造怡和機器的未來發展。

希望大家喜歡今期的怡和機器雜誌。

Kevin O'Brien
歐嘉榮

Transform for a Better Tomorrow

勇於求變 持續向前

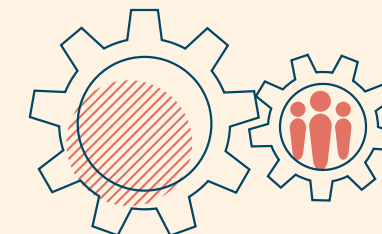


Throughout its 95-year history, JEC's success could be attributed to the teamwork among professionals from different backgrounds and generations. Another key factor in the JEC success story is the ability, and indeed desire, to move with the times. Planning, resilience, flexibility, listening, reflection and the refusal to accept second best are some of the qualities that can transform an individual, and they can also transform and grow a company. In this issue, we look at the stories of the younger generation of JEC staff and learn how they embarked on their career paths, the lessons they have learnt, the successes they have had and the changes they have undergone towards a better tomorrow.

怡和機器成立95年來，不但有賴不同年代及專業背景的員工發揮團隊力量，群策群力，另一成功關鍵亦源自於與時並進的求變精神。一間企業的進步，匯聚了每位員工的努力，也反映出當中的共同特質，包括良好的規劃能力、適應力、靈活應變、自我增值和精益求精。今期的怡和機器雜誌，我們訪問了來自不同地區及業務範疇的新一代員工，了解他們事業發展的心路歷程、從中汲取的經驗及得著，如何在各自的崗位上發揮所長，攜手創建更美好的怡和機器。

Gareth Kwok 郭肇聰

JEC Hong Kong - Assistant Manager,
Maintenance and Renovation
香港怡和機器 - 保養及維修助理經理



Becoming an All-rounded Engineer 認清目標 發展專業

While still studying at university, Gareth started thinking about what he would do after graduation. As a well-established company with a high profile in the region, JEC represented an attractive option and he joined JEC as a Management Trainee (MT) in 2008. During the two-year period as an MT, Gareth was assigned to different business units on a rotation basis to gain an overview of how JEC's business operates. From a fresh graduate to a professional engineer, one of the lessons he learned as a future leader is the ability to adapt to different work environments and that personal development is founded on the willingness to learn from one's colleagues. The training and his subsequent work experience has equipped Gareth with financial, technical, business and communication skills in addition to his professional experience.



Gareth還在唸大學時，已開始思考事業發展方向，在2008年畢業時被怡和機器的業務規模及信譽所吸引，加入成為管理培訓生。在受訓的兩年期間，Gareth獲安排輪流到各個業務部門實習，全面地了解了公司運作。從

職場新鮮人踏上成為專業工程師之路，Gareth悟到一個道理：領袖需要具備的特質之一，是適應不同工作環境的能力，而要做到這點，則取決於個人心態，向同事積極學習，裝備自我。有系統的培訓及實戰經驗，讓Gareth提升專業能力外，亦增長了財務、科技、商業和溝通技巧等範疇。

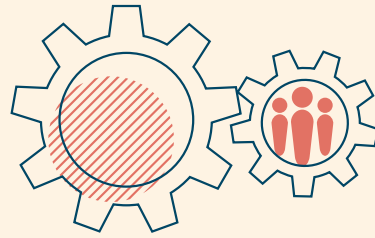
Over the years, Gareth has been involved in various projects as his professionalism progressed. One of his most memorable experience was a chiller replacement project at a 50-storey grade A office building. It was a race against time, as the team were given just ten hours on the Easter night to complete one of the most critical project milestones. Detailed planning, sophisticated method statement and accurate execution became crucial. Gareth says, 'In this project, I was like a film director, writing the screenplay and then directing the actors, while getting prepared to respond quickly if anything goes wrong.' As a result of all the preparation work, the team completed the project smoothly in the end. Looking ahead, Gareth expects himself to be a leader of 100% engineer and 100% businessman as his experience increases by time.



這些年來，Gareth曾參與多項不同規模的工程，所擔任的角色及責任亦隨之而增加。他提到最難忘的一次經驗，是為一幢50層高的甲級寫字樓更換空調系統。由於建築物全天候運作，團隊必須於復活節晚上的10小時內完成其中一個最關鍵的工程進度指標，與時間競賽，講求鉅細無遺的事前準備、度身製訂的方案及精準度極高的執行能力。Gareth說：「在這項工程中，我就像電影導演，負責編寫劇本，然後指導演員。同時還需要時刻保持警覺，以預備萬一出現狀況時能立即作出回應。」在充分的準備下，團隊最終不負使命，順利完成項目。提到未來事業發展，Gareth希望能夠成為更全面的領袖——百分百的工程師及百分百的生意人。

Billy Chan 陳紹斌

JEC Hong Kong - Assistant Project Manager,
Electrical and Mechanical Contracting
香港怡和機器 -
機電合約工程助理項目經理



Finding the Right Career Path 尋回初心 發揮潛能

As part of his degree course, Billy joined a one-year internship programme run by the Electrical and Mechanical Services Department and had the chance to visit different government project sites and JEC was one of the contractors at the site. Since he wanted to take part in the planning and execution of such projects, he applied to JEC and joined the MT programme after graduating. The programme gave Billy all-round training not just in technical aspects, but also on the management, accounting and sales sides, while interacting with people from different work backgrounds both internally and externally. Billy left JEC to work briefly for a large consultancy as a Building Services engineer before rejoining the company, because, as simple as he puts it, 'the satisfaction of working at JEC is irreplaceable, as it allows me to experience a whole range of job types'.

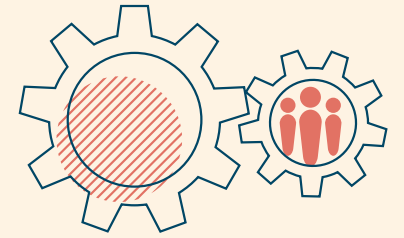


曾在大學時期參加機電工程署舉辦之一年實習計劃的Billy，在一次政府項目參觀中認識當時為承建商之一的怡和機器，並對項目規劃和執行產生興趣，於畢業後獲聘加入成為管理培訓生。培訓除了讓Billy接觸到業務技術層面的內容，亦透過與公司內外不同工作背景的人士合作，多方面認識企業管理、會計及銷售等範疇，拓闊了他的眼光，也更希望嘗試從不同角色了解業界，找出最合適自己的路向。期間，Billy曾轉職到一間大型工程顧問公司擔任屋宇裝備工程師，但最後他還是選擇重回怡和機器，原因很簡單而直接：「在怡和機器我能參與到各種類型及規模的項目，所帶來的滿足感是不能從其他工作單位中得到的。」

重投怡和機器後，Billy參與了不少公營大型機電工程項目。由工程師開始，到成為助理項目經理，他從個人的技術基礎上發展，為客戶提供全面而創新的解決方案，進而磨練管理團隊的技巧。對他而言，工作上最開心的時刻是與夥伴並肩，完成一項又一項的挑戰。「現在我看到年輕的同事在怡和機器成長，尋到他們的工作奮鬥目標，就好像看見當年的我，這種快樂是難以言喻的。」Billy笑言。

**Winnie Poon 潘淑賢**

JEC Hong Kong -
Group Financial Controller
香港怡和機器 - 集團財務主管



Staying Open to Change 擁抱轉變 自我突破

Winnie came to know JEC when performing audits of the company as an external auditor. When a vacancy came up in 2012, she jumped at the chance to join the JEC team as Senior Financial Controller. Initially, Winnie worked in financial reporting, but in time her responsibilities extended to manage also the regional units, contract administration and accounting functions to her current role as the Group Financial Controller. Since 2017, Winnie has been involved in enterprise resource planning and procurement projects - areas that are new not only to her but also to JEC. While Winnie finds it rewarding to work for a large organisation with a regional reputation for reliability and quality, it is the culture at JEC that she cherishes above all. 'The great thing about JEC,' she says, 'is that it is a transparent and open workplace, where people are encouraged to voice and listen to different ideas.'



Winnie likens JEC to a big family where people from different departments work closely together to get things done. Looking ahead, Winnie expects to gain further valuable experience in the next few years, as she seeks to develop into a financial all-rounder who can help to drive the business forward. Outside work, Winnie took up running and tennis after joining JEC, and has warm memories of being part of the team that took part in events such as the Hong Kong Marathon. "The first step out of one's comfort zone is always the most difficult part, but then situations are actually not as daunting after the first step forward has been taken. The key is to stay open to changes." Winnie remarks.

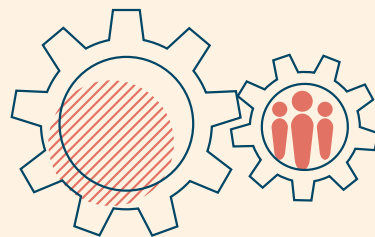
原為審計師的Winnie因工作關係認識怡和機器，並在2012年因緣際會下，加入公司，出任高級財務主管一職。數年間，Winnie的工作範圍由香港的財務部擴展至其他區域辦事處的財務管理，以至合約行政部等，成為集團財務主管。此外，她亦涉足新領域，參與公司近年的企業資源規劃和採購系統等新項目。Winnie很珍視能夠在一間於亞洲區以可靠和優質而聞名的企業發展事業，但更重要的，是怡和機器的企業文化。她說：「怡和機器企業文化的優越之處，是高透明度和開明態度，同事們都積極發表和聆聽不同意見。」

Winnie將怡和機器比喻為一個大家庭，各部門的成員之間都緊密協作，齊心一致將任務完成。Winnie期望可以在未來數年吸收更多的寶貴經驗，以更全面的財務知識，為業務發展作出貢獻。工作以外，Winnie在加入怡和機器後，開始跑步和打網球，更成為香港馬拉松團隊的其中一員。她從運動中體會到不少工作以至人生道理：「要踏出舒適區，第一步往往是最困難的；但只要敢於跨出第一步，就會發現情況比想像中容易。最重要的，是對轉變抱著開放態度。」



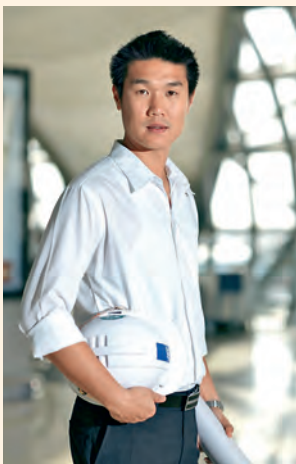
Pongpeera Sae Kow

JEC Thailand - BIM Section Manager
泰國怡和機器 — 建築信息模型經理



Keeping Up with Industry Trends 自我增值 緊貼行業趨勢

Pongpeera has a special link with JEC Thailand (JECT), having joined the company twice. He first joined JECT as Site Engineer after graduating from college in 2003. In 2006, he decided to pursue a Master of Science in Architectural Engineering (Heating, Ventilation and Air-conditioning) in the United States. Then Pongpeera rejoined the company in 2010 as a Testing and Commissioning engineer. He came back not just because JECT is the number one mechanical, electrical and plumbing (MEP) contractor in Thailand but also because it is his second home. Pongpeera's continuous professional development has enabled him to offer quality services to clients in an ever-changing market by putting theory into practice across a range of projects. In 2012, Pongpeera was the first at JECT to be qualified as a Leadership in Energy and Environmental Design (LEED) Accredited Professional. The following year, he was involved in the Australian Embassy Complex project in Bangkok – JECT's first Building Information Modelling (BIM) project. In 2014, he obtained NEBB professional certification in testing, adjusting and balancing (TAB), becoming the first certified NEBB TAB professional in Thailand. He is now the BIM Department Manager, responsible for all BIM projects at JECT.



Pongpeera enjoys working at JECT because everyone is friendly and supportive and the projects are interesting and challenging. They need to come up with the solution based on the requirements from customers. 'There're times that we encounter something that are new to us,' says Pongpeera, 'so we make it happen through researches and careful planning drawing on our experiences.' Pongpeera's ambition is to set up a team that can provide both design and installation services, in other words, a one-stop service provider. To this end, he received Accredited Tier Designer Certification, with a focus on data centre design, as well as the WELL Accredited Professional (WELL AP™) credential signifying advanced knowledge of health and well-being in the built environment.

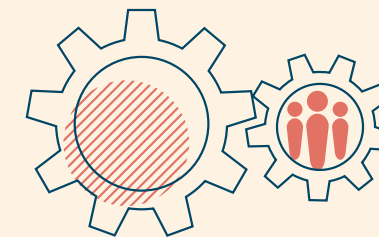
Pongpeera曾兩度加入泰國怡和機器。他於2003年從大學畢業後首次加入JECT擔任工地工程師。2006年，他決定遠赴美國修讀建築工程（暖通空調）碩士課程，並於2010年重返泰國怡和機器「再續前緣」，成為測試及調試工程師。對他來說，這決定不單因為泰國怡和機器是當地首屈一指的機電及管道工程承辦商，更重要的，是公司就好比他的第二個家。Pongpeera不斷自我增值專業知識，務求在瞬息萬變的市場中，保持優質服務水準，同時學以致用，將理論實踐到不同項目當中。2012年，Pongpeera成為JECT第一位獲得美國綠建築協會評分系統LEED認可專業資格的員工；其後他亦參與了泰國怡和機器曼谷首個建築信息模型項目——澳洲領事館綜合項目。他在2014年獲得了NEBB測試、調整及平衡（TAB）的專業認證，成為泰國首位獲得此專業資格的工程師。他現時帶領建築信息模型部門團隊，負責當地的相關項目。

Pongpeera很享受在泰國怡和機器工作，因為所有人都很友善，也會互相幫忙，而且負責的項目亦很有趣和具挑戰性。他們經常要因應客戶的需求，提出完善的解決方案。Pongpeera說：「我們有時也會遇上新的技術挑戰，這時候就需要作資料搜集、詳細的具體規劃及憑著自身經驗，將項目逐步完滿實現。」他的目標是帶領團隊增值，除安裝技術外，亦提供設計服務，成為一站式服務供應商。另外，他先後獲得Tier設計師認證，專注於數據中心的設計及規劃；以及健康建築專業資格認證（WELL AP™）。



Peachy Tiu

JDI, The Philippines - Assistant Vice President,
Construction Supplies
菲律賓JDI - 建築產品助理副總裁



Growing Together with the Company 全情投入 共同成長

Peachy started her career at JDI when she was a young marketer eager to spread her wings and face new challenges. From her first days in the company, she realised that the staff at JDI shared the same vision - to go beyond your limits and to provide the best value to the Filipino homeowners. Peachy started in 2008 as a Product Manager, becoming AVP in the Construction Supplies Division last year. The two sides of her work she finds most rewarding are growing the business by developing and launching products and identifying new business opportunities, and the chance to inspire and lead people. She believes the key to success is to never stop challenging oneself and to be resilient in the face of difficulties or disappointments. As she puts it, 'The key to self-transformation is to acknowledge your mistakes, learn from them, and always look towards becoming a better version of yourself'.

As a leader, she has learnt that to win people over to her cause in order to achieve a certain goal, it is very important that each team member understands the reason why they are doing something. Peachy derives most satisfaction from the various product launches that have expanded JDI's position in the market. In the last ten years, JDI's portfolio has grown from seven products to 20, with a CAGR of 6%, through the repositioning of existing products and the launch of new ones in competition with market leaders. Looking ahead, Peachy plans to launch a JDI venture in Myanmar, 'I am looking forward to learning about a new market in a new culture. It should help me become a well-rounded business leader.'



Peachy最初加入Jardine Distribution Inc. (JDI)，便迅即愛上這個大家庭。當時的她剛投身營銷行業，正積極尋求新挑戰，並與JDI一拍即合，遇到一群同樣充滿熱誠、志同道合的員工，以超越自我界限為信念，為當地客戶提供優質服務。從2008年起成為產品經理，Peachy至今已建是建築產品助理副總裁。她認為工作上最具意義的兩方面，是透過開發、推出產品與尋找新商機以發展業務；以及啟發和領導別人的機會。她深信，成功的關鍵在於不停挑戰自己，即使面對困難，感到失落時也不要氣餒。正如她所說：「自我蛻變的關鍵在於承認錯誤，並從中學習，繼續努力做得更好。」

作為一名主管，她明白到要達成目標，最重要的是讓團隊成員充分了解背後的原因，這樣他們才會樂意支持。Peachy從推出各類型產品，逐步拓展JDI市場佔有率中獲得莫大滿足感。她與JDI團隊的不懈努力也得到了回報，過去10年間，JDI透過為現有產品重新定位，並推出具競爭力的新產品，將其產品組合由7種增加至20種，複合年增長率達6%。展望未來，Peachy將參與JDI進軍緬甸市場，她表示：「我很期待接觸新文化，融入新市場，並從中學習成為一個更全面的商業領袖。」

The above five different stories of JEC staff indeed highlight the essence of 'change for better', a belief to be shared among individuals across different regions and professions. More than achieving personal career growth, it also entails the core values of JEC - technical proficiency, empowered workforce, alliance and masterful customer service that creates a better future.

事實上，以上五位怡和機器員工的分享，他們當中的經歷和崗位角色雖然各有不同，但背後都牽繫著一份積極求變的共同信念。從個人的事業蛻變的過程中，他們都體現了公司的核心價值，以專業技術及不懈增強實力，同時發揮團隊力量，為客戶提供卓越服務，讓怡和機器走得更遠。

Meet Mr Kevin O'Brien - New Chief Executive of JEC

認識新任怡和機器行政總裁——歐嘉榮先生



Mr Kevin O'Brien has been appointed Chief Executive of JEC and has commenced his new role on 1st February 2018. Prior to joining JEC, Kevin was an Executive Board member of Gammon (also part of the Jardine Matheson Group), and has participated in many large scale developments, both in Hong Kong and Macau across both public and private sectors.

歐嘉榮先生於2018年2月1日履新成為怡和機器行政總裁。在加盟怡和機器前，他曾是金門建築（怡和集團旗下公司）的執行委員會成員，先後參與香港及澳門多個大型公共及私營工程項目。

Q: What is your initial impression on JEC? What are your thoughts in developing the company?

A: I am impressed with some of the excellence that I have seen around the business so far in my short time here. I intend to build on it to ensure we have a consistent and forward looking engineering capability that is digitally and sustainably engaged and in-tune with the modern Asian economies and markets that we serve. We have a strong brand across Asia, underpinned by the strength of our mother company, Jardine Matheson. I would like to see our brand values evolve to be in line with the innovative young companies we see in the headlines these days. **We need to stay fresh, be aware of new technology and move fast to develop skills and new business opportunities arising from this change.** I also intend to continue to grow with our customers. I firmly believe that our strong relationships across both public and private sectors, built on the principles of trust and quality of our service will continue to serve us well and will underpin the future success of JEC.

Q: What do you see as the latest trend in the industry? How should the company respond to the change(s) and what are the key factors to stay on top of the market?

A: Digitise...Disrupt...Innovate. It is everywhere around us and is happening across all sectors. The engineering sector in which we operate is behind in this regard - ranked just above agriculture in a recent survey! People in our sector will hide behind low margins as a reason not to do anything but, sooner rather than later, the digital disruptors will come to our sector and we need to be ready. **Being ready means being ahead.**

Q: As a veteran in engineering industry, could you please share with us some remarkable experience of projects that you've done?

A: I've spent the majority of my career here in Asia, and so most of my most memorable projects have been here. My early years in Hong Kong were spent working on several contracts at the new Hong Kong International Airport at Chek Lap Kok. I spent 3 years based on site and it was in the days before the road and rail connections were completed and so the commute to work was by boat – a novel distraction! Over the years, I have continued to be actively involved in projects at the airport and being back on there always brings back such happy memories for me and am very

問：你對怡和機器的初步印象如何？你對公司發展有甚麼想法？

答：公司業務的優秀表現讓我在短時間內留下深刻印象。我計劃在這基礎上再接再厲，確保我們維持一貫水準和前瞻性，在科技應用及可持續發展的層面上緊貼亞洲現代經濟體和市場。憑藉母公司怡和集團的雄厚實力，怡和機器在亞洲享負盛名，我希望能夠將品牌價值逐步演進，與行內富創意的新冒起公司看齊。**我們要與時並進，留意新科技所帶來的技術轉變和商機，並迅速作出回應。**此外，我亦希望與客戶一同成長，我深信我們與公私營業界的良好關係，是建基於信任和服務質素，並會繼續讓怡和機器邁向成功。

問：你認為業界最新的趨勢是甚麼？公司該如何應對這些變化，以及在市場上保持領先的關鍵又是甚麼？

答：數碼化、突破、創新——各行各業正時刻面對這些變化。然而，工程界在這些方面都相對落後，最近更有調查指出其排名僅在農業之上。業界人士以低利潤為藉口，不願意作任何改變，但突破性的數碼化發展遲早出現，我們需要做好準備，因為**準備就緒，便能領先一步。**

問：作為工程界的資深人士，可否與我們分享一些項目的難忘經驗？

答：我職業生涯的大部分時間都在亞洲度過，當中也有不少難忘的項目。初到香港的幾年，我負責赤鱗角香港國際機場的工程，當年道路和鐵路網絡還未完善，我有整整三年的時間都是乘船往返工地。多年來，我一直積極參與機場的不同項目，只因那裏載有很多美好的回憶。不論是過去還是現在，能夠參與這項世界級的基建工程，都令我非常自豪。

proud to be part of the team that makes it a world class piece of infrastructure – both then and now.



I have also spent a lot of my time working on MTRC projects - both new build and improvements to the connectivity of existing stations as the network has grown. Most recently I was involved in the West Island Line extension project. After project delivery and the successful opening of the line, you are able to reflect and think about the new friends you have made, the team spirit that helped deliver the works and the benefit to the community that you have been part of.

Q: What brought you to Asia? Why do you choose Asia to be your home now?

A: When I worked back in London in my formative years in the industry, I was surrounded by people that had spent some time overseas. I was inspired by them to broaden my horizons and spend 2 years working overseas. In July 1995, I received the call from my then boss to see if I was interested in a 2-year posting to Hong Kong. "Yes please!" was my immediate response, and over 20 years later I am still here! Hong Kong is now home for my family and I. My children were all born here. I am a city boy at heart and the pace of Hong Kong, the culture of Asia, the excitement of the projects that we work on around the region – it all suits what I now consider important for my personal and professional life.

Q: Over the years, you have progressed with your career through a number of senior management and operational positions. What are the motivations driving you to go further?

A: One of the main motivators as a leader in any business is to keep the momentum going for the whole of the team. As you climb the ladder, your team size typically grows and your responsibility to them grows with it. On an individual level, you have to provide a platform for the talent in your team to achieve their own objectives – some will be personal and some will be tied to the business needs. In a senior management role, you have to reflect back on your own progress and look at what has helped you to succeed and ensure that the same opportunities are given to the team.

I never like to see any team or business reach a perceived comfort zone. **Staying alert of market demand and trends and adjusting your plan to suit and exploit these movements is key to our future success.**

Q: What are your hobbies during your leisure time and how do you balance your work and life?

A: My leisure time is in high demand from my young family and so unfortunately golf is relegated in terms of importance compared to activities that we can enjoy together as a family, such as hiking or the cinema. I am also involved in community work through both the professional institutions and in a personal capacity. I think it is important to appreciate what we have and give something back to the community in which we live.



此外，我也在港鐵項目留下不少足跡，包括新建和隨着擴展現有網絡而進行的車站改善工程。最近，我參與了西港島綫項目，當完成項目，鐵路順利開通後，回想過程中結交的新朋友、從團隊協作而得以順利竣工及為社區帶來的得益，是很有意義的事，讓人回味無窮。

問：你為何來到亞洲？是甚麼讓你選擇以亞洲為家？

答：我早年在英國倫敦投身工程界，接觸到不少曾在海外工作的人，啟發了我到海外工作，擴闊自己眼光的想法。1995年7月，我接到當時上司的電話，問我有沒有興趣派駐香港兩年，我立刻回答「好！」20多年後的今天，我仍然在這裏。香港現在是我和家人的家，我的孩子都在這裏出世。無論是香港的節奏、亞洲的文化特色，以至參與項目所帶來的滿足，都很適合我對生活和事業上的追求。

問：多年來，你曾出任不少高級管理層和營運職位，你的事業動力是甚麼？

答：作為任何企業的領袖，保持整個團隊的發展勢頭是主要動力之一。當你一步步晉升，團隊規模會逐漸壯大，責任也隨之增加。在個人層面上，你需要為團隊成員提供實現個人和業務相關目標的平台。作為一名高級管理人員，你需要認真反思自己一路以來的成功因素，並確保團隊成員也能得到同樣的機會。

我從不希望看到任何團隊或公司安於舒適區內，**時刻留意市場需求和趨勢，調整計劃去配合和善用這些變化，才是未來成功的關鍵。**

問：你在閒暇時有甚麼興趣？你會怎樣平衡工作和生活呢？

答：我的空餘時間大多都給了孩子，所以很多時會選擇親子活動，例如行山和看電影，也因此高爾夫球變得相對次要。我亦有透過專業機構和以個人身份參加社區工作，因為懂得感恩我們所擁有，回饋社群都是相當重要的。



JEC Puts Sustainable Consumption into Practice

怡和機器實踐可持續消費

Current consumption pattern of city dwellers has caused huge pressure and serious environmental impact on the planet. In the face of issues such as inadequate space for waste treatment facilities, water and energy over-consumption, and excessive use of chemical fertilisers and pesticides, managing the environmental impacts and human health, safety and well-being have gained rising concerns among environmental organisations and different sectors in Hong Kong.

Committed to effective environmental stewardship, JEC has joined as Sustainable Consumption Enterprise under the Fostering Sustainable Consumption for Hong Kong Business and the Community Programme in 2017. Organised by Business Environment Council, the scheme encourages enterprises to consider the environmental and social impacts of the products and services they purchase and to recognise companies that show commitment to the cause.

To achieve the goals, JEC implements various measures in its projects on three major areas:

現時都市人的消費模式為地球環境帶來莫大壓力和影響。在面對廢物處理設施空間短缺、水資源和能源過度消耗，以及過度使用化學肥料和殺蟲劑等問題時，本港環保組織和社會各界都愈來愈關注控制環境影響，以保障人類的健康、安全和幸福生活。

怡和機器致力於推動環保管理，在2017年響應由香港商界環保協會發起的推動香港商界及社區可持續消費計劃，成為支持可持續消費行為企業。該計劃旨在鼓勵企業在採購的過程中，同時考慮產品及服務對環境和社會的影響，並認可對可持續消費有顯著貢獻的機構。

為達成目標，怡和機器在以下三大範疇的項目實行不同的措施：

Energy Consumption Control

Leveraging on its expertise in chiller upgrades, JEC helps clients to comply with the new energy efficiency standard through supply and install chillers adopting environmentally-balanced low-pressure refrigerants that save more energy.



能源消費減控

憑藉我們在製冷機組更新工程的專業實力，怡和機器透過提供及安裝可使用環保型低壓製冷劑之製冷機組，協助客戶符合新型能源效率標準，減省能源。

Water Saving and Enhancement

JEC was awarded with a clean-water project that involves installation of water filtration system for a theme park in Hong Kong. Also known as the Defender, the system uses ultrafine volcanic perlite powder to trap dirt, which saves up to 90% backwash water, 50% energy, and 80% of space needed for the same capacity as compared to traditional sand filter.



節水和提升水質

怡和機器為香港一間主題公園的淨水項目安裝名為Defender的濾水系統，以超細火山石粉吸附灰塵，與相同過濾容量的傳統系統相比，可節省高達90%再用水及50%能源，同時省下80%使用空間。

Energy Conversion

JEC works with international power generation equipment supplier to provide biogas conversion facilities. These facilities are capable of converting waste to new energy, achieving waste reutilisation for optimal usage.

能源轉換

怡和機器與國際發電設備供應商合作，提供沼氣轉換裝備，有效地轉廢為能。



What is Sustainable Consumption? 甚麼是可持續消費？

It refers to the use of services and related products which respond to basic needs and bring a better quality of life while minimising the use of natural resources, toxic materials as well as emissions of waste and pollutants over the life cycle of the service or product, so as not to jeopardise the needs of future generations.

可持續消費指在享用為滿足人類基本需要及提升生活質素而產生的服務與相關產品時，將自然資源和有害物料的使用量降至最低，以減少它們所造成的廢物和污染，避免為下一代帶來不良影響。



JEC Secured MVAC Contracts for Link REIT Properties

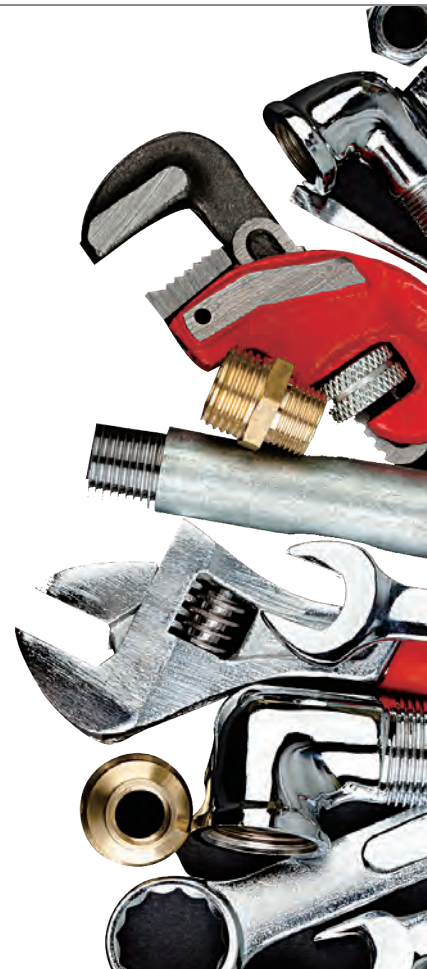
怡和機器獲領展物業機械通風及空調系統合約

JEC has been awarded the contracts for planned routine preventive maintenance, emergency call-outs and emergency maintenance, rectification of defects and repair works, as well as providing operators for direct digital control remote centre for the mechanical ventilation and air-conditioning installations for shopping centres, carparks, markets and cooked-food stalls under Link REIT in Yuen Long, Tuen Mun, Tsuen Wan, Kwai Tsing, Tung Chung, Kowloon Centre and Kowloon West.

The project was commenced in December 2017 and will be completed in December 2019.

怡和機器獲得領展多項位於元朗、屯門、荃灣、葵青及東涌，以及九龍中心和九龍西各區物業的合約，包括日常例行預防性維修保養、緊急維修，以及突發事故的維修保養、修復及維修工程。同時，怡和機器也為各領展商場、停車場、街市及熟食檔的機械通風及空調系統的遙距中央監控中心提供營運服務。

項目已於2017年12月展開，預計於2019年12月完成。



JEC Philippines Secured Legrand UPS Supply and Installation for Shell Exploration Philippines

菲律賓怡和機器為蜆殼菲律賓勘探公司供應及安裝Legrand無間斷電源供應器

JEC Philippines forged partnership with BTicino Philippines in 2017 with an aim to diversify its electrical products by offering Legrand Uninterruptible Power Supply (UPS), a world leading manufacturer of electrical equipment.

With combined competence in electrical and mechanical works, the company has secured the contract for the supply, installation, testing and commissioning of Keor T UPS for Shell Exploration Philippines which was completed in December 2017.

菲律賓怡和機器於2017年與菲律賓BTicino集團建立夥伴關係，為其電力方案引入由頂尖電力設備製造商Legrand生產的無間斷電源供應器，進一步拓展產品線。

菲律賓怡和機器憑藉在機電工程方面的豐富經驗，獲得蜆殼菲律賓勘探公司的合約，為對方供應、安裝、測試及調試Legrand出產的Keor T無間斷電源供應器。工程已於去年12月完成。



JEC Thailand Provides Air Conditioning System for Samyan Mitrtown Project

泰國怡和機器為Samyan Mitrtown項目提供空調系統

JEC Thailand was awarded contracts for supply, installation, testing and commissioning of piping work of air conditioning system at Samyan Mitrtown. The project is located at the Phaya Thai Road, Bangkok. The project is a mixed-use complex, comprising office building, hotel, residential units, and commercial spaces to be built on a 13-rai plot of land with a total area of 222,000 sqm including retail space called Urban Life Library, intelligent office space, and residential space called Neo Explorer Living Platform.

The Samyan Mitrtown project features green building technology with its design and operation system that can meet the Leadership in Energy and Environmental Design (LEED) Building Design and Construction Category's Gold rating for its Core & Shell. The project will be completed in May 2019.

泰

國怡和機器獲得位於Samyan Mitrtown的空調系統管道供應、安裝及調試工程合約。此綜合項目位於曼谷披耶泰道，樓面面積達22.2萬平方米，包括辦公室大樓、酒店、住宅單位及商業用地，落成後將設有名為Urban Life Library的購物商場、智能辦公室及名為Neo Explorer Living Platform的住宅。

這個項目以環保建造技術為特色，其核心及外牆設計與營運系統均符合美國綠色建築設計協會的領先能源與環境設計（LEED）建築設計及建造類別的金獎評級。項目預計將於2019年5月竣工。



JEC Thailand Renovates M&E Systems for Goodyear Factory

泰國怡和機器為固特異輪胎廠翻新機電系統

JEC Thailand has won the contract for the renovation, supply and installation of the air-conditioning & ventilation system, process piping & fire protection systems for Goodyear Factory Thailand. Located on Phaholyothin Road, Pathumthani with a total area of 7,000 sqm, the factory comprises a production building and a warehouse.

Goodyear is one of the world's leading tire companies with operations in most regions of the world and is one of the most recognised brand names. The project was completed in February 2018.

泰

國怡和機器獲得固特異輪胎廠翻新、供應及安裝空調及通風系統、化工處理管道和消防系統合約。廠房座落於泰國巴吞他尼府的拍鳳裕庭路，佔地7,000平方米，包括生產大樓及倉庫。

固特異是國際知名的大型輪胎製造商之一，業務遍及世界各地。此項目已於2018年2月完成。





JEC Singapore Renewed Facilities Management Agreement with Raffles Quay Asset Management

新加坡怡和機器與新加坡萊佛士碼頭續簽設施管理協議

JEC Singapore has renewed a five-year facilities management agreement with Raffles Quay Asset Management for their premier properties One Raffles Quay and Marina Bay Financial Centre Tower 1, 2 and 3. Having been the facilities management M&E provider for these properties since operation, JEC Singapore's services include operation, maintenance and energy monitoring of HVAC system, fire services, generators and ELV equipment.

新加坡怡和機器與新加坡萊佛士碼頭資產管理公司續簽了為期5年的設施管理協議，為其優質物業萊佛士碼頭一號及濱海灣金融中心的1、2及3座提供服務。這些物業自營運以來，新加坡怡和機器一直為其設施管理提供機電設備，其中包括暖通空調系統、消防設備、發電機及特低壓電設備的運作、保養和能源監測。



JEC Singapore Secured Two MVAC Contracts for Real Estate Developments

新加坡怡和機器為兩地產項目設計及安裝通風空調系統

JEC Singapore has recently secured contracts for the design and build of mechanical ventilation and air-conditioning (MVAC) systems for two real estate projects.

The first one is the new erection of an 11-storey business park development at Ayer Rajah Avenue Extension while the other one is a mixed-use development comprised of an 8-storey hotel block and two 28-storey residential towers, with swimming and communal facilities at Orchard Boulevard and Cuscaden Road.

The projects are due to complete in June 2018 and June 2021 respectively.

新加坡怡和機器最近取得兩份工程合約，為兩個地產發展項目設計及安裝機械通風及空調系統。

第一個項目是樓高11層、座落於亞逸拉惹路的新商業園大樓，而另一項目則是位於烏節大道與卡斯加登路一帶的綜合發展項目，由樓高8層的酒店和兩棟樓高28層的住宅連游泳池及公用設施所組成。

兩項工程分別預計於2018及2021年6月完成。



▲ Business park development at Ayer Rajah Avenue Extension
位於亞逸拉惹路的新商業園大樓



Recognition from Monsanto to JDI

JDI獲業務伙伴孟山都嘉許

Jardine Distribution Inc. (JDI) was recognised as Best in Sales 2017 across the South East Asia region by Monsanto, one of its key business partners.

JDI was assigned as the exclusive Philippine distributor of Monsanto's line of vegetable seeds under the brand Seminis in 2012. "In just one year, JDI was able to establish Seminis as a reputable brand among vegetable growers, specifically for its highland seeds variety portfolio that includes cabbage, broccoli, and bell pepper, to name a few." remarked Jayson Salazar, Product Manager for Seminis Seeds.

JDI and the Monsanto team have agreed on the road map to another successful year for Seminis Seeds sales. "In 2018, we will maximise the full Seminis seeds portfolio and place focus on its lowland varieties; this will form an integral part in JDI's growth in 2018." said Joevic Pasit, Vice President of Agro Products Division of JDI.



JDI獲主要業務夥伴孟山都頒發最佳銷售2017獎，表揚其於東南亞區內的突出表現。

JDI自2012年起成為孟山都Seminis牌蔬果種子的菲律賓獨家分銷商。Seminis種子產品經理Jayson Salazar分享道：「僅僅一年，JDI成功在菜農間建立起Seminis的信譽，特別是品牌的高原種子組合，包括捲心菜、西蘭花和菜椒等。」

JDI和孟山都團隊已制定銷售策略，務求於2018年再創佳績。JDI農產品部副總裁Joevic Pasit表示：「在2018年我們會全力增加Seminis種子組合的供應，並着重宣傳低地種子系列，可望成為本年銷售增長動力。」



Jardine Distribution Inc. Steps up Efforts to Reduce Carbon Footprint

JDI致力減少碳足跡

JDI always has an innate gravitation towards the color green, given its Agro Products business. At this time though, the organisation itself, is turning green. As early as in 2016, JDI President Edwin Hernandez kicked off the company's environmental management regime with a formal monitoring of internal carbon footprint.

The results are encouraging:

- Head Office at Makati City – is now consuming electricity at 20% reduction;
- Davao Office at Davao City – target reduction achieved at 11%;

As for warehouse at Canlubang, consumption has increased due to a newly constructed climate controlled storage for seeds portfolio but is seen as an opportunity for further improvements. "We believe we are in the right direction. Our next target is to reduce office paper consumption and gasoline consumption." adds Edwin Hernandez.

對JDI而言，綠色不僅代表農產品業務，也是環保的象徵。早於2016年，JDI總裁Edwin Hernandez展開環保管理計劃，就公司內部的碳排放量作常規監察。

重點成果包括：

- 馬卡蒂市總部——耗電量降幅達20%；
- 達沃市辦公室——目標降幅11%已經達成。

而坎盧邦貨倉則因新建的氣候控制種子儲存系統而增加了耗電量，目前JDI正着手研究改善方法。Edwin Hernandez補充：「我們認為，這些結果證明公司的方向正確。我們下一個目標是減少辦公室的用紙量和耗油量。」



JEC Group Briefing 2018 2018 年度集團簡報會

On 2nd March, 200 staff from Hong Kong and regional offices gathered for the annual Group Briefing. Riding on the theme "Transform Today - Better Tomorrow", presentations were given by Chief Executive Mr Kevin O'Brien and representatives of business units and regional offices to outline the business outlook and strategic directions for the coming year, as well as key initiatives to enhance productivity and modernise business processes for long term sustainable growth.

在3月2日，200位香港及地區辦事處員工出席年度集團簡報會。會上，行政總裁歐嘉榮先生、各業務及地區辦事處代表圍繞「勇於求變 邁步向前」這一主題，勾勒集團來年業務前瞻及策略部署，以及旨在提升生產力和優化業務流程的主要措施，為集團長遠發展增添動力。



JEC Customer Cocktail Reception 2017 怡和機器2017年度客戶酒會

JEC Customer Cocktail Reception was successfully held at the Owners Box of Happy Valley Racecourse, Hong Kong on 12th October 2017 with around 230 guests and JEC staff attended. Themed "Sustainability • Together We Engineer a Better Asia", a series of significant projects integrating sustainability values within the JEC Group was showcased.

怡和機器周年客戶酒會於2017年10月12日假香港跑馬地馬場馬主廂房圓滿舉行，超過230名賓客和員工出席盛會，場面熱鬧。酒會以「可持續發展・攜手建設更美好亞洲」為主題，在場內展示一系列採合可持續發展理念和價值的重要項目。



JEC Spring Dinner 2018 2018年度怡和機器周年晚宴

Over 1,300 colleagues and guests gathered at the Star Hall of KITEC for JEC Spring Dinner on 2nd March. The annual occasion featured performances by the senior management and Management Trainees with the theme "Agents of JEC", filling the atmosphere with joy and happiness.



逾1,300名同事和嘉賓於3月2日齊集九龍灣國際展覽中心匯星，出席怡和機器的周年晚宴。本年度的晚宴以「JEC特務」為主題，管理層及一眾管理培訓生送上精彩的演出，為晚宴錦上添花。



Walk Up Jardine House 2018 2018齊步上怡廈

JEC participated in the annual fundraising event Walk Up Jardine House on 18th March 2018 as one of the major sponsors. JEC formed a team of 5 colleagues to compete in the Jardine Matheson Group Men's Team Relay, who paid efforts in conquering the 49 storeys of Jardine House in 4'33".

This year the event raised HK\$3.3 million for MINDSET, a registered charity established by the Jardine Matheson Group with an aim to make a real difference in the area of mental health.

2018年3月18日，怡和機器參與了一年一度的齊步上怡廈活動。作為主要贊助商之一，怡和機器派出五位同事組隊參加男子團體（怡和集團）接力賽，最終以4分33秒跑畢怡和大廈49層樓梯。

今年活動為思健籌得合共330萬港元善款。思健是由怡和集團成立的註冊慈善組織，以提倡精神健康為目標。



Discover Traditional Culture in Hong Kong

體驗香港原居民傳統文化

Partnered with Jockey Club Tai Po Integrated Children & Youth Services Centre, JEC's Caring Team visited an indigenous village Chau Tau Village with 18 children in December 2017. The group had a great time making traditional Cantonese snack Put Chai Ko on a wood-fired oven and learnt about the village culture and tradition.

Located in Lok Ma Chau, Chau Tau Village was originally settled by members of the Man clan, one of the five major clan groups in the New Territories.



2017年12月，怡和機器義工隊與賽馬會大埔青少年綜合服務中心合作，帶領18名小童參觀洲頭村，並學習以柴火爐製作廣東傳統小食鹹仔糕，體驗舊日生活文化。

洲頭村位於落馬洲，是新界五大氏族之一文氏的聚居地。

Hong Kong	
Project (Location)	Scope of Work
704-730 King's Road	Supply of pumps and valves
8-10 Wong Chuk Hang Road	Supply and installation of diesel genset system
Castle Peak Power Station	Air-conditioning system enhancement
	Chilled water system enhancement
Cathay Pacific Catering Services Ltd	Maintenance services for HVAC plant
Central Police Station	Supply of ironmongery
Central-Wanchai Bypass Tunnel Building	Supply and installation metal door, glass door, ironmongery and raised flooring
Centre of Excellence in Paediatrics	Supply and installation of diesel genset system
	Supply and installation of ELV systems and fire services system
	Design, supply and installation of building maintenance unit and pneumatic tube
	Supply of central battery system
	Supply and installation of automatic door system
	Supply of LED exit sign
China Mobile Data Centre Expansion	Supply and installation of diesel genset system
China Resources Headquarters	Supply and installation of diesel genset system
Chinese University of Hong Kong	Supply and installation of building maintenance unit and pneumatic tube system at medical centre
City One Shatin	Supply of LED lightings
City University of Hong Kong	Supply and installation of diesel genset system
CMI China Mobile Data Center, Tseung Kwan O	Supply and installation of diesel genset system
Commercial Development at Wang Chiu Road and Lam Lee Street, Kowloon Bay	Supply and installation of diesel genset system
Data Centre at Ta Chuen Ping Street	Supply of "Flamebar" fire resistant ductwork
Equinix HK5-II	Supply of valves
	Supply and installation of FS system
	Supply of valves
Exchange Square	Electrical installation - power supply upgrade works
	FSID work for One, Two and Three Exchange Square
	MVAC Work for FSID
	One and Two Exchange Square public area renovation at Central, Hong Kong Circulation, 3/F lobbies and Rotunda, and 4/F restaurant balcony
	Supply of aluminium ceiling at One and Two Exchange Square, 45/F
	One and Two Exchange Square lift lobbies renovation and FS renovation
Fanling Police Tactical Unit	Improvement works on air-conditioning systems
FEHD Environmental Hygiene Offices-cum-Vehicle Depot	ASD Contract No. SS D505 - building maintenance unit for reprovisioning of FEHD Sai Yee Street Environmental Hygiene Offices-cum-Vehicle Depot at Yen Ming Road
Fire Services Training School, Tseung Kwan O	Supply and installation of steel doors
Fortune Pharmaceutical New Factory Development	Supply of central battery system and valves
	Supply and installation of pneumatic tube system
Freespace, The West Kowloon Cultural District	Supply of ironmongery
Global Switch Hong Kong 1	Supply and installation of dummy loadbank for diesel genset system
Grade A Office Development at 348 Kwun Tong Road	Supply and installation of raised floor
Grandtech Centre	Supply and installation of LED high-bay and LED tubes
Hactl	10-year FS maintenance contract on dry fire
Hang Seng Bank Head Office Building	Supply and installation of stairlift
Hang Seng Bank office at Mega Box	Supply and installation of raised floor system
Harmony Redevelopment at Hysan Avenue	Supply and installation of diesel genset system
Haven of Hope Hospital	Mechanical handling and lifting installation
	Supply and installation of diesel genset system
	Supply and Installation of patient hoist

Major Contracts Listing 工程合約	
Heung Yip Road Hotel	Supply and installation of linen chute
Hong Kong Country Club	Supply and installation of cock flooring system
HKEx Data Centre	Term maintenance contract of MEP installations
Home Ownership Scheme Development at Sha Tsui Road, Ex-Tai Wo Hau Factory Estate, and Ching Hong Road, Tsing Yi	Supply and installation of PV system, smart metering system and information display system
Hong Kong Airlines Aviation Centre	Supply and installation of lifting appliance
Hong Kong Disneyland	Supply and installation of air-compressors
Hong Kong Electric (Contract No. 15/9024)	Supply and commissioning of mobile gas turbine genset
Hong Kong Housing Authority - Construction of Public Housing Developments at North West Kowloon Reclamation Site 6 and Fat Tseung Street West	Supply and installation of MVAC system
Hong Kong Housing Authority - Tin Shui (II), Tin Yan and Tin Yuet Estate	Supply of stainless pump
Hong Kong Housing Society - Subsidized Sale Flats Project at Shatin Area 36C	Electrical, ELV and MVAC installation nominated sub-contract
Hong Kong International Airport	Contract P568 supply and installation of diesel genset system
	Design, supply and replacement of programmable logic controllers and associated input/output modules for baggage handling system (phase 2)
	Design, supply, installation, testing and commissioning of baggage handling system for arrival bags delivery and early bags storage at Terminal 1
	Maintenance services for automatic sortation systems of baggage handling system
	Maintenance services for conveyor systems of baggage handling system
	Maintenance, improvement and refurbishment works for baggage trolley mechanical recirculation systems
	Maintenance, improvement and refurbishment works for electrical and mechanical systems at Midfield Concourse and North Satellite Concourse
	Provision of static VAR generator for sortation system of baggage handling system
	Replacement of door mechanism for automatic sliding doors at Terminal 1
	Replacement of emergency stop pushbuttons in baggage handling system at Terminal 1
	Supply and installation of carpet tile at checkin counters, Terminal 1&2
Hong Kong Jockey Club	Supply and installation of filtration system for Olympic Equine Pool
Hong Kong Ocean Park	Ocean Park Tai Shue Wan Water World Project water filtration system
	Supply of valves
Hong Kong Ocean Park Marriott Hotel	Aquarium and all associated works, and supply and installation of swimming pool filtration system
	Supply of cooling tower, pumps and valves
	Supply and installation of diesel genset system and PV panel
	Supply of ironmongery
Hong Kong-Zhuhai-Macao - Hong Kong Boundary Crossing Facilities Vehicle Clearance Plazas and Ancillary Building and Facilities	Supply and installation of aluminum baffle ceiling
Hong Kong-Zhuhai-Macao Bridge	Supply and installation of dock leveler and weighbridge
	Supply and installation of lifting appliances at road section between Scenic Hill and Hong Kong Boundary Crossing Facilities
	Supply and installation of raised floor and carpets
	Supply and installation of smoke curtain
	Supply of central battery system
	Supply of ironmongery for PCB façade package
HSBC Main Building, HMB Project Bridge II	Supply and installation of fuel system
I Tech Data Centre Phase 2	Supply and installation of diesel genset system
Jubilee Garden	Supply and installation of LED lightings
Kai Tak Nullah Reconstruction and Upgrading	Supply and installation of stoplogs
Kennedy Town Swimming Pool (Phase 2)	Supply and installation of swimming pool filtration system
KLB Data Center, Kowloon Bay	Modification of FS system
	Supply and installation of diesel genset system
Lai Chi Kok Park Swimming Pool	Replacement of boilers and associated pipework system
Lamma Power Station	Mechanical ventilation and air-conditioning installation for extension civil and building work for Unit L10
Landmark, Central	FSID work
	MVAC and electrical work for toilet renovation
	MVAC work for FSID
Lee Garden Three (Sunning Plaza)	Supply & Install "Exterpark" outdoor decking
Liantang / Heung Yuen Wai Boundary Control Point Building	Design, supply and installation of building maintenance unit for building and associated facilities project
	Design, supply and installation of sewage treatment plant
	Supply and installation of diesel genset system
	Supply of central battery system, ironmongery, cooling tower, centrifugal separator, automatic tube cleaning system
	VRF air-conditioning system and D.O. system, "Flamebar" fire resistant ductwork
M+ Museum, The West Kowloon Cultural District	Supply and installation of scissors platform
	Supply and installation of smoke curtain system and diesel genset system
	Supply of ironmongery, pumps and valves
Maritime Square Phase 2	Supply and installation of outdoor timber decking
MTR Corporation	Building management system installation and modification for East Rail Line station control room in Tai Wo, Fanling and Sheung Shui stations
	Design, supply and installation of electrical works, fire services, pumps and drains, swimming pool filtration system and supply of ironmongery for the reprovision of Harbour Road Sports Centre and Wan Chai Swimming Pool
	Mobile lifting jack in Pat Heung Depot
	Modification works of train wash plant at Ho Tung Lau Dept
	Refurbishment of rail track lifting hoist control system at Ho Tung Lau Depot
	Replacement of air-cooled chillers at various stations
	SCL Contract 1122 - building services for Admiralty South Overrun Tunnel
	SCL Contract 1191 - floodgate system for Shatin to Central Link phase 2
	Supply and installation of access cover for South Island Line (East)
	Supply and installation of CCTV for Hung Sheung Kiu bus depot
	Supply and installation of CCTV for Nam Cheong station
	Supply and installation of LED lighting at Coastal Skyline
	Supply and installation of LED motion sensor tubes and emergency battery kits at Sorrento and Tung Chung Crescent
	Supply and installation of LED motion sensor tubes and emergency battery kits and LED downlights at The Arch
	Supply and installation of lifting appliance for Ho Tung Lau Depot
	Supply and installation of outdoor timber at 810A West Kowloon Terminus Station North
	Supply and installation of smoke curtain for Siu Hong and Long Ping stations
	Supply and installation of steel door and frames for Shatin to Central Link
	Supply and installation of stoplogs for 810B West Kowloon Terminus Station South
	Supply and installation of wheelset balancing machine at Pat Heung Depot
	Supply of cooling tower for SCL Contract 1164 Diamond Hill station
	Supply of cooling tower water pumps and valves for SCL Contract 1173 Hung Hom station
	Supply of fire pumps and cooling tower for Shatin to Central Link
	Supply of "Flamebar" fire resistant ductwork at SCL Contract 1177 Ma Tau Wai station and ancillary building
	Supply of "Flamebar" fire resistant ductwork for Express Rail Link
	Supply of metal door and ironmongery at Tin Shui Wai station
	Supply of pumps and valves for Contract K1847-16E
Mui Wo Sewage Treatment Works	Supply and installation of the lifting appliances

Major Contracts Listing 工程合約

Murray Building Hotel Development	Supply and installation of diesel genset system Supply and installation of filtration system for indoor swimming pool Supply of PHI air purifier Supply of pumps and fire resistant ductwork, fire pumps and central battery system
New Shun Hing Centre	Supply and installation of building maintenance unit
New World Centre	Supply and installation of IPC wall protection Supply and installation of outdoor timber decking at Podium and Tower Supply and installation of smoke curtain Supply and installation of vertical platform Supply of valves, fire pumps, 'Flamebar' fire resistant ductwork
Ngau Tam Mei Animal Waste Composting Plant	Improvement, operation and maintenance of animal waste composting plant and collection services
Office Development at 1 Hennessy Road, Wanchai	Supply and installation of vehicle turntable Supply of valves, pumps and cooling towers
Organic Waste Treatment Facilities Phase 1	Supply of absorption chiller and fire hydrant pumps Supply of installation of smoke curtains
Pacific Place	Replacement of high tension chillers
Peninsula Centre	Supply and installation of LED lightings
Prince's Building and Alexandra House	Electrical installation - power supply upgrade works
Proposed Commercial Development at NKIL6512	Supply and installation of diesel genset system
Proposed Office Building at Hoi Bun Road No.123 Kwun Tong	Supply and installation of diesel genset system
Public Library and Indoor Recreation Centre in Area 3, Yuen Long	Supply and installation of steel doors and supply of ironmongery
Public Rental Housing Development at Choi Yuen Road	Supply and installation of diesel genset system
Public Rental Housing Development at Fo Tan Phase 1 & 2	Supply and installation of diesel genset system
Queen Elizabeth Hospital	Supply of cooling tower and valves
Residential Development at Deep Water Bay Drive	Supply and installation of swimming pool filtration system
Residential Development at Ngau Tam Mei	Supply and installation of swimming pool filtration system
Residential Project at Oil Street (IL8920)	Supply of 'Flamebar' fire resistant ductwork Supply and installation of timber decking system
Sai Kung Hotel	Supply and installation of linen chute, vertical lifting platform and vehicle turntable
Shangri-La Hotel, Hung Hom	Supply and installation of Exterpark outdoor decking
Shatin and Sai Kung Sewage Treatment Works and Pumping Station	Overhaul and testing of electrical and mechanical equipment of sewage treatment plant and pumping station
Shek Kip Mei Police Station	
Shek Wu Hui Sewage Treatment Works	Improvement works on air-conditioning systems Provision of electrical and mechanical facilities for further expansion phase 1A advance works and Ng Chow South Road Sewage Pumping Station Supply of diffuser aeration system and valves
Sheung Shui Water Treatment Works	Improvement of dewatering plant at Sheung Shui Water Treatment Works
Sorrento and Harbourside, Kowloon Station	Supply and installation of LED lightings
South Horizons	Supply and installation of LED lightings
Space Service Office of Regus	Supply and installation of carpet tiles
Tai Po Sewage Treatment Works	Modification works for food waste & sewage sludge anaerobic co-digestion pilot trial
Tai Po Sports Centre	Supply and installation of building maintenance unit
Tai Po Water Treatment Works	Supply of granular activated carbon
Taikoo Place 2A Redevelopment	Supply of 'Flamebar' fire resistant ductwork, cooling towers, centrifugal separators, pumps and valves Supply and installation of smoke curtain
Telford Plaza I	Retrofit of chillers in plant room A
TGT Data Center, Tseung Kwan O	Supply and installation of diesel genset system
The American Club - Country Club	Chiller replacement works
The Education University of Hong Kong	Replacement of PAUs
Tin Fu Court	Supply and installation of LED lightings
Tin Shui Wai Hospital	Design and supply of pumps, air quality products and central battery system
TKO Town Lot 93	Supply and installation of diesel genset system
To Kwa Wan Preliminary Treatment Works	Provision of electrical and mechanical equipment for detritor no. 1 and 2
Tseung Kwan O Heritage Hiking Trail and the Heritage Information Centre	Supply and installation of stairlift
Tsuen Wan 5 Bayside	Supply of valves
Tuen Mun Children and Juvenile Home	Triennial term contract for maintenance of electrical and mechanical installations Contract No. 1872EM16T
Tuen Mun Western Trunk Sewerage Tunnel	Supply and installation of stoplogs
Tung Chung Lot 11	Supply and assembly of cooling tower
TW5 Bayside, West Rail Tsuen Wan West Station	Supply and installation of outdoor timber decking
TW5 Residential Development	Supply and installation of aluminum ceiling at bathroom & kitchen
Water Supplies Department Regional Office	Design, supply and installation of grey water and rainwater recycling plant
Wellcome & Mannings Various Stores at HK, Kowloon and NT	MVAC repair and maintenance services for various stores (2016 - 2018)
Wellcome Supermarket, Park Central	MVAC works
West Kowloon Government Office at Yau Ma Tei	Design, supply and installation of building maintenance unit Supply and installation of diesel genset system Supply and installation of raised floor Supply of central battery system
Residential development at West Rail Nam Cheong Station	Supply and installation of swimming pool filtration system
The Former Central Government Office, West Wing	Supply of valves
WF Joseph Lee Primary School	Supply and installation of swimming pool filtration system
XiQu Centre, The West Kowloon Cultural District	Supply and installation of smoke curtain system and timber doors

Macau

Project (Location)	Scope of Work
Louis XIII Hotel	Supply and installation of genset systems and supply of valve
Macau Light Rail Transit	Design and supply for painting booth Supply and installation of lifting appliance
MGM Cotai	Design, supply and installation of building maintenance unit and turntable Supply and installation of cooling tower, smoke guard, and supply of pumps and valves
One Central Macau	Supply of LED Lighting
SJM Hotel at Cotai	Supply of valves
St. Regis, Venetian Macau, Parcel 5B	Supply of ironmongery
Venetian Cotai P3	Supply and installation of diesel genset system Supply of ironmongery and sanitaryware

Thailand

Project (Location)	Scope of Work
Carpark Building of The Mall Bangkae	Supply, installation, testing and commissioning the air-conditioning & ventilation system, electrical & communication system and sanitary & fire protection system
Chatrium Hotel Pathumwan	Supply, installation, testing and commissioning of electrical & communication system and fire protection system
Chatrium Residence Sathon	Supply, installation, testing and commissioning of air-conditioning system
Goodyear Factory	Supply, installation, testing and commissioning of process piping system, sanitary & fire protection system and air-conditioning & ventilation system
ICONSIAM	Supply and installation of BAS system
King Power at Suvarnabhumi Airport	Operation and maintenance of air-conditioning & ventilation system and sanitary system
Le Cordon Bleu Dusit Culinary School	Supply, installation, testing and commissioning the air-conditioning & ventilation system, electrical & communication system and sanitary & fire protection system
Mahasawin Hotel	Supply, installation, testing and commissioning of air-conditioning system and sanitary & fire protection system
Mass Rapid Transit Authority of Thailand (MRTA Blue Line: Wat Mangkon station and Sam Yod station)	Supply, installation, testing and commissioning of air-conditioning & ventilation system

Mass Transit System Project in Bangkok (Red Line - Don Mueang station, Lak Hok station and Rangsit station)	Supply, installation, testing and commissioning of air-conditioning & ventilation system and sanitary & fire protection system
Microchip Technology (Thailand) Factory	Supply, installation, testing and commissioning of electrical system, Air-conditioning & ventilation system, utility and fire protection system
Samyan Mitrtown	Supply, installation, testing and commissioning of piping work of Air-conditioning system
Shrewsbury International School, City Campus	Supply, installation, testing and commissioning of air-conditioning & ventilation system, electrical & communication system and sanitary & fire protection system
Singha Complex	Supply, installation, testing and commissioning of air-conditioning & ventilation system, electrical & communication system and sanitary & fire protection system
Suvarnabhumi Airport Expansion Project	Supply, installation, testing and commissioning of sanitary & fire protection system, tunnel ventilation system

Singapore

Project (Location)	Scope of Work
7-11 Stores	Maintenance of refrigerated cases
77R Investments Pte Ltd at 77 Robinson Road	Air-conditioning preventive maintenance
A&A ACMV works for Cycle & Carriage	Supply and Installation of ACMV
AIA Singapore Pte Ltd	Air-conditioning preventive maintenance
Asia Square Tower 1 & 2 at 8 Marina View	Air-conditioning preventive maintenance Mechanical and Electrical operation services
Assisi Hospice	Mechanical and electrical facility management
Avnet Asia Pacific Pte Ltd	Air-conditioning preventive maintenance
Bank of America (CBRE Pte Ltd)	Subcontract for facilities management services
Bank Of America at Harbourfront Place	Air-conditioning preventive maintenance
Big Box Jurong	ACMV & chiller plant maintenance
Boustead Projects -DoJo LLP ("Media Hub" at Ayer Rajah)	Design and Build Air-conditioning and mechanical ventilation installations, testing and commissioning, servicing and maintenance Provision of M&E service (preventive maintenance / inspections)
CBRE c/o State Street Bank	Non-comprehensive service and maintenance of washroom facilities for Deutsche Bank premise
CBRE GWS Holding(s) Pte Ltd	Supply of comprehensive maintenance contract for MBFC T3 irrigation system for 2018
Central Boulevard Development Pte Ltd	Air-conditioning preventive maintenance
CityDev Real Estate at Palais Renaissance	Service for the Air-conditioning equipment
Cycle & Carriage (188 Pandan Loop)	Service for the Air-conditioning equipment
Cycle & Carriage (209 Pandan Garden)	Service for the Air-conditioning equipment
Cycle & Carriage (239 Alexandra)	Service for the Air-conditioning equipment
Cycle & Carriage (301 ALEXandra)	Maintenance of ACMV system and provision of technicians
DBS China Square Ltd (PWC Building)	Air-conditioning preventive maintenance
DCP (Sentosa) Pte Ltd	Air-conditioning preventive maintenance
Digo Corporation Pte Ltd	Air-conditioning preventive maintenance
Far East Organisation at Orchard Central Pte Ltd	Preventive maintenance for FCU's Fire extinguishers, waste water pumps and water detection systems and electrical system
GBT Global Business Travel Services	Maintenance for fan coil units at #B1-42 Maintenance for fan coil units at #B1-40 Non-comprehensive M&E service
HKL Breadtalk	Air-conditioning preventive maintenance
HKL Coffee & Toast	Maintenance of ACMV system and provision of technicians
Jardine Lloyd Thompson Pte Ltd	Facilities management service for FM-Keppel Towers 1 & 2
JLL - DBS Asia Central/Asia Hub/Asia Gateway	Mechanical and electrical facility management
JLL - OUE Bayfront	Preventive maintenance for FCU's fire extinguishers, waste water pumps and water detection systems and electrical system
Keppel Land International Ltd c/o Property Management	ACMV maintenance contract
Keppel Towers/Tower 2	ACMV and plumbing services
Liberty International Underwriters	Mechanical and electrical operation and service
Mandai Crematorium & Columbarium	Mechanical and electrical operation and service
Marina Bay Business Financial Tower 1 & 2 (RQAM)	ACMV preventive maintenance and plumbing and sanitary maintenance
MBFC Tower 1 & 2 - BFC	Server room air-conditioning
MBFC Tower 3 - CBD	Mechanical and electrical facility management
MBFC Tower 1 & 2 and Link Mall	Non-comprehensive maintenance contract
MCL Land	Design, supply and installation of ACMV and BMS
One Raffles Link	Mechanical and electrical operation and service
One Raffles Quay Pte Ltd	Variable refrigerant flow (VRF) preventive maintenance contract
Orchard Boulevard Development	Air-conditioning comprehensive maintenance
ORQ	Air-conditioning comprehensive maintenance
Overseas Family School	ACMV maintenance contract
Royal Plaza On Scotts at 25 Scotts Road	Maintenance agreement for comprehensive maintenance works for air-conditioning chiller plant and converted air distribution systems
Royal Plaza On Scotts at 8 Claymore Hill	Air-conditioning preventive maintenance
Singapore Technologies Electronics Limited (AMK)	Ball tech auto tube system maintenance contract
ST Electronics Ltd	Trane chiller preventive maintenance
ST Marine Pte Ltd	Electrical system maintenance services
ST Microelectronic Pte Ltd (AMK & TPY Sites)	Provision of MA services
STATSChip Pte Ltd	Air-conditioning preventive maintenance
Suntec City	Managing Agent Contract
The Food, Drinks and Allied Workers Union	Maintenance for fan coil units at #01-02
The MCST Plan No. 224 & 225 at Thong Teck Building	Preventive maintenance for FCU's fire extinguishers, waste water pumps and water detection systems and electrical system
THE MCST Plan No. 2278	Air-conditioning preventive maintenance
The Sandwich Shop	Air-conditioning preventive maintenance
Trading Technologies Pte Ltd	Air-conditioning preventive maintenance
Victorian Property Holding Pte Ltd (Elishan) at Manulife Centre	
Westin Singapore (Daisho Development S'pore Pte Ltd)	
Yongjin Holdings Ltd	

The Philippines

Project (Location)	Scope of Work
City of Dreams	Electrical works for ELV rooms Comprehensive preventive maintenance and monitoring services
Family Mart	Facilities management
Foramall	Operation and maintenance
Google	Supply and install of CITEC PACU
Integrated Facilities Management for JLL - IBM and JLL - Schneider Electric	Operation and maintenance
Marikina North Sewer Network and Pump Station	Design, build, testing and commissioning of sewage pumping station
Monde	Operation and maintenance
On-Semi	Operation and maintenance
Property and Asset Management for various facilities managed by Jones Lang LaSalle	Operation and maintenance
Property Management for Ayala Properties Management Corporation	
Putatan Water Treatment Plant 2	Design, build, testing and commissioning of water treatment plant
Ramada	Operation and maintenance
Rustans Super Center Inc.	Facilities management
Sewage Treatment Plant in Libingan ng mga Bayani	Design and construction of sewage treatment plant facilities
Shell Philippines	Rehabilitation of living quarter HVAC units
Sonion Manufacturing Plant	Supply and installation of HVAC units and MEPF
Taguig North Sub-Catchment Sewerage Project - Makati South Sewer Line and Pumping Station	Supply, build, testing and commissioning of sewage pumping station and lift stations
United Laboratories	Operation and maintenance
Widus Tower 3	Supply and installation of MVAC system

The Jardine Engineering Corporation, Limited

Hong Kong Headquarters

5/F, Tower A, Manulife Financial Centre, 223-231 Wai Yip Street,
Kwun Tong, Kowloon, Hong Kong
Tel 852 2807 1717 | Fax 852 2887 9090
Email jec@jec.com | www.jec.com

Mainland China

Room 2513-2514 Shenhua Commercial Building, No. 2018 Jiabin Road, Shenzhen 518005, PRC
Tel 86 755 8238 3928 | Fax 86 755 8238 3938 | Email jecchina@jec.com

Macau

Alameda Dr. Carlos D'Assumpcao, No. 180, Edf. Tong Nam Ah Centre Com 18/U-V, Macau
Tel 853 2825 3077 | Fax 853 2825 3076 | Email jecmacau@jec.com

Myanmar

Building (A), Room (A-203), 2/F, Malikha Condo Thingangyun TSP,
Yangon, The Republic of the Union of Myanmar
Tel 95 9 761496198 | Email jecmyanmar@jec.com

The Philippines

G/F Jardine Building, 2901, JM Compound, Faraday Street Corner,
Osmeña Highway, 1234 Makati City, The Philippines
Tel 632 843 6020 | Fax 632 844 2235 | Email jecphilippines@jec.com

Singapore

96 Mandai Estate, Singapore 729927
Tel 65 6362 0660 | Fax 65 6362 0770 | Email jecsingapore@jec.com

Thailand

SPE Tower 16th-17th Floor, 252 Phaholyothin Road, Samseannai, Phayathai, Bangkok 10400
Tel 66 2 079 5999 | Fax 66 2 615 2991-4 | Email jecthailand@jec.com

THE JARDINE ENGINEERING CORPORATION, LIMITED

